

# Eustace High School Band

## at a glance

Todd Felty, Patricia Fields  
 and 903 425 5225  
 Chad Bentley eustaceband@eustaceisd.net

### 1st Six Weeks

- 1) Basic Sound Production and Fundamentals
  - a) good posture
  - b) good wind support
  - c) follow conducting/ - direction
  - d) self-discipline
  - e) characteristic sound
  - f) tune by matching pitch

- 2) Counting Rhythms

- 3) Sight read ensemble parts

- 4) Interpret Music Symbols & terms

- a) note names
- b) note values
- c) notation

- 5) Musical Performance

- a) Scales Bb, Eb, Ab, Db, F, C, G, Chromatic
- b) UIL Show Music
- c) Incidental Game - Music
- d) Use of expression

- 6) Evaluate Musical performance

- 7) Begin Audition Music

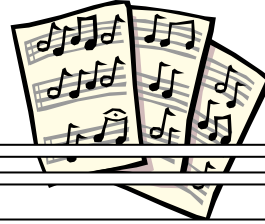
- 8) Demonstrate

- Marching Techniques
  - a) Mark Time
  - b) Forward
  - c) Backward
  - d) Slide
  - e) Drill positions

### 2nd Six Weeks

UIL Performance

### 3rd Six Weeks



Begin Holiday Concert selections

Begin Solos & Ensembles

### 4th Six Weeks

Auditions

Auditions/Conc (ATSSB)

### 5th Six Weeks

UIL Solo & Ensemble

UIL Concert / Sight-reading

### 6th Six Weeks

End of year Concert

Preparation for Next Year

